

# AGENDA

**Meeting:** South West Wiltshire Area Board  
**Place:** Nadder Centre, Weaveland Road, Tisbury, SP3 6H  
**Date:** Wednesday 18 July 2018  
**Time:** 6.30 pm

---

Including the Parishes of Alvediston, Ansty, Barford St. Martin, Berwick St John, Berwick St Leonard, Bishopstone, Bowerchalke, Broad Chalke, Burcombe Without, Chicklade, Chilmark, Compton Chamberlayne, Dinton, Donhead St Andrew, Donhead St Mary, East Knoyle, Ebbesbourne Wake, Fonthill Bishop, Fonthill Gifford, Fovant, Hindon, Kilmington, Mere, Netherhampton, Quidhampton, Sedgehill and Semley, South Newton, Stourton with Gasper, Stratford Toney, Sutton Mandeville, Swallowcliffe, Teffont, Tisbury, Tollard Royal, West Knoyle, West Tisbury, Wilton and Zeals.

---

**The Area Board welcomes and invites contributions from members of the public. The chairman will try to ensure that everyone who wishes to speak will have the opportunity to do so.**

If you have any requirements that would make your attendance at the meeting easier, please contact your Democratic Services Officer.

**Refreshments and networking opportunity from 6:00pm .**

---

Please direct any enquiries on this Agenda to Lisa Moore (Democratic Services Officer), direct line 01722 434560 or email [lisa.moore@wiltshire.gov.uk](mailto:lisa.moore@wiltshire.gov.uk)

All the papers connected with this meeting are available on the Council's website at [www.wiltshire.gov.uk](http://www.wiltshire.gov.uk)

Press enquiries to Communications on direct lines (01225) 713114 / 713115.

---

## Wiltshire Councillors

Cllr Jose Green, Fovant and Chalke Valley (Chairman)  
Cllr Pauline Church, Wilton and Lower Wylde Valley  
Cllr George Jeans, Mere  
Cllr Tony Deane, Tisbury (Vice-Chairman)  
Cllr Bridget Wayman, Nadder and East Knoyle

## **RECORDING AND BROADCASTING NOTIFICATION**

Wiltshire Council may record this meeting for live and/or subsequent broadcast on the Council's website at <http://www.wiltshire.public-i.tv>. At the start of the meeting, the Chairman will confirm if all or part of the meeting is being recorded. The images and sound recordings may also be used for training purposes within the Council.

By entering the meeting room you are consenting to being recorded and to the use of those images and recordings for broadcasting and/or training purposes.

The meeting may also be recorded by the press or members of the public.

Any person or organisation choosing to film, record or broadcast any meeting of the Council, its Cabinet or committees is responsible for any claims or other liability resulting from them so doing and by choosing to film, record or broadcast proceedings they accept that they are required to indemnify the Council, its members and officers in relation to any such claims or liabilities.

Details of the Council's Guidance on the Recording and Webcasting of Meetings is available on request.

### **Parking**

To find car parks by area follow [this link](#). The three Wiltshire Council Hubs where most meetings will be held are as follows:

**County Hall, Trowbridge**  
**Bourne Hill, Salisbury**  
**Monkton Park, Chippenham**

County Hall and Monkton Park have some limited visitor parking. Please note for meetings at County Hall you will need to log your car's registration details upon your arrival in reception using the tablet provided. If you may be attending a meeting for more than 2 hours, please provide your registration details to the Democratic Services Officer, who will arrange for your stay to be extended.

### **Public Participation**

Please see the agenda list on following pages for details of deadlines for submission of questions and statements for this meeting.

For extended details on meeting procedure, submission and scope of questions and other matters, please consult [Part 4 of the council's constitution](#).

The full constitution can be found at [this link](#).

For assistance on these and other matters please contact the officer named above for details

	<b>Time</b>
1 <b>Welcome and Introductions</b>	6.30pm
2 <b>Apologies for Absence</b>	
3 <b>Declarations of Interest</b>  To receive any declarations of disclosable interests or dispensations granted by the Standards Committee.	
4 <b>Minutes (Pages 1 - 12)</b>  To confirm as a correct record and sign the minutes of the previous meeting held on Wednesday 30 May 2018.  To note any matters arising from the minutes of the last meeting.	
5 <b>Chairman's Announcements</b>	
6 <b>Area Board funding review for 2017/18</b>  The Area Board will hear directly from previous grant recipients about the outcomes achieved from the use of this funding.	6.40pm
7 <b>Partner and Community Updates (Pages 13 - 40)</b>  To receive any verbal updates from Partners and Community Groups present, including: <ul style="list-style-type: none"> <li>• Police – Neighbourhood Teams</li> <li>• Fire &amp; Rescue</li> <li>• Youth - LYN</li> </ul> To note the following written updates attached to the agenda: <ul style="list-style-type: none"> <li>a) Police</li> <li>b) Fire</li> <li>b) Wiltshire Council Items for Information</li> <li>c) CCG</li> <li>d) Healthwatch Wiltshire</li> </ul> <i>Note: Speakers are reminded that they each have a 3 minutes slot, unless they have previously discussed alternative arrangements with the Community Area Manager.</i>	7.25pm
8 <b>Nadder Centre Update</b>  To receive an update.	7.50pm

9 **Health & Wellbeing Group (HWG) (Pages 41 - 42)**

7.55pm

To note the actions of the HWG as detailed in the attached notes of the last meeting held on 4 July 2018.

10 **Area Board Funding (Pages 43 - 50)**

8.00pm

Community Area Grants

The Board members will consider applications for funding from the Community Area Grants Scheme:

<b>Applicant</b>	<b>Amount requested</b>
<b>Applicant:</b> Salisbury & South Wilts District Scout Council <b>Project Title:</b> Dennis Marsh House - Improvements  <a href="#">View full application</a>	£5000.00
<b>Applicant:</b> Ebbesbourne Wake village Hall Management Committee <b>Project Title:</b> Defibrillator for Ebbesbourne Wake  <a href="#">View full application</a>	£1050.00
<b>Applicant:</b> Compton Chamberlayne Village Hall <b>Project Title:</b> Compton Chamberlayne Village Hall Guttering Repair  <a href="#">View full application</a>	£650.00
<b>Applicant:</b> Studio Theatre <b>Project Title:</b> Studio Theatre Extension  <a href="#">View full application</a>	£10000.00
<b>Applicant:</b> Weaveland Road Allotment Society <b>Project Title:</b> Weaveland Road Allotment Society New Community Shed  <a href="#">View full application</a>	£600.00
<b>Applicant:</b> BISHOPSTONE VILLAGE HALL <b>Project Title:</b> Bishopstone Village Hall Car Park	£5000.00

<a href="#">View full application</a>	
<b>Applicant:</b> CH4LKE Mobile <b>Project Title:</b> Community mobile and broadband signal - CHALKE MOBILE Community Interest Company  <a href="#">View full application</a>	£5000.00
<b>Applicant:</b> CHALKE VALLEY SHORT MAT BOWLS CLUB <b>Project Title:</b> Chalke Valley Short Mat Bowls Club Replacement Mats  <a href="#">View full application</a>	£1360.00

11 **Close**

The next meeting of the Board is on Wednesday 19 September, at 6.30pm

**8.30pm**



# MINUTES

**Meeting:** SOUTH WEST WILTSHIRE AREA BOARD  
**Place:** Nadder Centre, Weaveland Road, Tisbury, SP3 6H  
**Date:** 30 May 2018  
**Start Time:** 6.30 pm  
**Finish Time:** 8.45 pm

---

Please direct any enquiries on these minutes to:

Lisa Moore (Democratic Services Officer), Tel: 01722 434560 or (e-mail) [lisa.moore@wiltshire.gov.uk](mailto:lisa.moore@wiltshire.gov.uk)

Papers available on the Council's website at [www.wiltshire.gov.uk](http://www.wiltshire.gov.uk)

---

## **In Attendance:**

### **Wiltshire Councillors**

Cllr Jose Green (Chairman), Cllr Pauline Church (Vice-Chairman), Cllr Tony Deane and Cllr Bridget Wayman

### **Wiltshire Council Officers**

Stephen Harris, Community Engagement Manager  
Lisa Moore, Democratic Services Officer

### **Town and Parish Councillor Representatives**

### **Partners**

Wiltshire Police - Inspector Andy Fee

**Total in attendance: 35**

---

<u>Agenda Item No.</u>	<u>Summary of Issues Discussed and Decision</u>
1	<p><u>Election of a Chairman</u></p> <p>The CEM opened the meeting and called for nominations for Chairman for 2018/19.</p> <p>Cllr Wayman nominated Cllr Green, this was seconded by Cllr Church.</p> <p><b><u>Decision</u></b>  <b>That Cllr Jose Green was elected as Chairman of the South West Wiltshire Area Board for 2018/19.</b></p>
2	<p><u>Election of a Vice-Chairman</u></p> <p style="text-align: center;">Cllr Green was then in the Chair.</p> <p>The Chairman then called for nominations for Vice-Chairman for 2018/19.</p> <p>Cllr Wayman nominated Cllr Deane this was seconded by Cllr Church</p> <p><b><u>Decision</u></b>  <b>Councillor Tony Deane was elected as Vice-Chairman for 2018/19.</b></p>
3	<p><u>Welcome and Introductions</u></p> <p>The Chairman welcomed everyone to the meeting of the South West Wiltshire Area Board.</p>
4	<p><u>Apologies for Absence</u></p> <p>Apologies for absence were received from:</p> <ul style="list-style-type: none"> <li>• Phil Matthews</li> <li>• Jason Moncrieff</li> <li>• George Jeans</li> </ul>
5	<p><u>Declarations of Interest</u></p> <p>There were none.</p>
6	<p><u>Minutes</u></p> <p><b><u>Decision</u></b>  <b>The minutes of the previous meeting held on 21 March 2018, were agreed a correct record and signed by the Chairman.</b></p>



7	<p><u>Outside Bodies and Working Groups</u></p> <p>The Board considered the recommendations for nominated representatives to Outside Bodies and Working Groups, as detailed in the agenda.</p> <p><b><u>Decision</u></b>  <b>The Board approved the list of Outside Bodies and Working Groups as detailed in the agenda.</b></p>
8	<p><u>Chairman's Announcements</u></p> <p>The Chairman made the following announcements:</p> <ul style="list-style-type: none"> <li>• The Chalke Valley History Festival would start at the end of June – This was a good opportunity to experience some cultural elements.</li> <li>• The replacement for Lee Haines in Highways was Glen Brooks.</li> </ul>
9	<p><u>Waste Collection Service Changes</u></p> <p>Martin Litherland, Head of Waste Management gave a presentation on the upcoming changes to recycling for Wiltshire. Some of the points covered included:</p> <ul style="list-style-type: none"> <li>• From 30 July you would be able to recycle your plastic pots, tubs and trays, and drink and food cartons in your blue lidded bins in addition to the usual plastic bottles and cardboard.</li> <li>• This would include yoghurt pots, meat trays, margarine tubs, ice cream tubs and juice, milk and soup cartons. Please rinse and squash your recycling where possible.</li> <li>• Films and black plastic could not be recycled.</li> <li>• Black boxes would continue to be used for glass, paper, cans and textiles.</li> </ul> <p><u>Why are we making changes?</u></p> <ul style="list-style-type: none"> <li>• Recycling saves energy, costs less and frees up space in your household waste bin.</li> <li>• These changes will help us to meet our recycling target of 50% by 2020. Last year Wiltshire residents recycled 45% of their waste, an increase on previous years.</li> <li>• Recycling more reduces the waste which is sent to landfill and energy from waste plants.</li> <li>• Last year we sent just 20% of waste to landfill, compared to over 60% in 2007.</li> </ul> <p><u>Future Changes</u></p> <ul style="list-style-type: none"> <li>• Collection dates for recycling, garden and non-recyclable waste would not change when the new services are introduced on 30 July.</li> <li>• All collections would remain fortnightly.</li> </ul>

- We will continue to work with our provider, Hills Waste Solutions, to improve recycling services and make it even easier for you to recycle at home.
- You can keep updated on these changes and any future changes by signing up for email alerts by visiting the waste pages on council's website.

Don't forget

Plastic bottles, cardboard, yoghurt pots, meat trays, margarine tubs, ice cream tubs and juice, milk and soup cartons can all go in your blue lidded bin from 30<sup>th</sup> July. Please rinse and squash your recycling where possible.

Questions and comments included:

- Delighted with changes and figures of reduced amounts going to landfill. Will we get a sticker to put on the bins to remind us what we can put in them? Answer: It is a different communications message than we were going to run, we want to be very clear of what can go in to the bins and the black box. We will make sure that information is shared. The decision is yet to be decided. All details are available on the website.
- Could the Area Board have a project to produce the sticker for the community? Answer: Yes that is something the Board could do.
- Are we at the forefront for recycling in the country or are we behind others? Answer: We are middle I would say, we are trying to operate within a financial envelope whilst trying to meet the needs.
- Will we make changes in the future to increase our recycling ability? Answer: Yes we will. Technology has improved, with a more automated process which increases the rate at which we can separate the materials. The black box continues enabling us to run with our high values materials.
- Deposit schemes, for bottles and cans, and the pay as you go collection for bins, is there any scope to go down that route? Answer: We are not planning on doing that at present. The vehicles do not have specific weighing capability on them so not possible at the moment.
- Can you update on the situation of recycling food waste? Answer: No immediate plans to look at food waste at this point. We had 5000 responses and the majority were not stating a preference to have a separated food waste collection. We are meeting our targets without doing that.
- With regards to Household recycling centres, there is disappointment of the closure of the centres on different days. Having to go to alternative centres on those days. Is there any hope on the centres being open more and recycling more? Answer: We typically recycle between 70 – 80% of all material that goes through those centres. We are working with SEC who manage the sites, and looking at improving the re-use offer. The reduced hours were a consequence of reviewing the use of the facilities and the financial constraints. The consultation indicated that the majority of residents were comfortable of the days their sites were open and closed.

	<ul style="list-style-type: none"> <li>• Why are you not using the word Tetrapak? <u>Answer:</u> It is a brand name so we moved towards the term 'cartons'. We will be including them in our contracts in future.</li> <li>• Are there plans to recycle film and black plastic? <u>Answer:</u> It would be more likely to go to energy for waste than to landfill. They do pose difficult challenges to the industry. We do not want to take the risk of taking a material that we cannot recycle.</li> <li>• How much are we paying landfill tax? <u>Answer:</u> Its above £86 a ton, and has been going up each year. Other options of managing waste are becoming increasingly attractive. The disposal budget for the county is £27 million a year.</li> <li>• Can the slides be sent to the Parishes? – <u>Answer:</u> Running in parallel with this there are a set of pictorial information which can be shared.</li> <li>• Might there be hangers on the bins to inform people of the changes? <u>Answer:</u> We need to be careful as these changes are not happening until the 30 July, so any new materials would contaminate the blue bin up until that date, so we must be careful with distributing the message.</li> </ul>
10	<p><u>Hearing Loss and the 'Hear to Help' Service</u></p> <p>Gill Drayson presented information on the local project; the Hear to Help Scheme.</p> <p>In 2009 the Coop Group raised some money to run these projects around the county. Any venue that can be used free of charge is used for the sessions. We hold drop in clinics in the catchment area of Salisbury District Hospital, and these have to be run by volunteers. We have 19 sessions running per month, 1 – 2 hours a month. With 30 volunteers running the clinics for us.</p> <p>Locally we have a drop-in centre in Mere surgery, on the first Thursday of the month, this is where Gill launched the service in 2010.</p> <p>There are also sessions in Wilton and in Codford. We see between 10 – 15 people in Mere and 10 – 26 in Wilton in the hour and a half sessions.</p> <p>We help up to 300 people a month overall, by maintaining hearing aids for the patients. If you know anyone in your local area then please direct them to our service.</p> <p>Gill had previously tried to find a free venue to hold a session in the Tisbury area, so currently picked up patients to take them to other centres. She urged anyone in the Tisbury area who knew of a venue that could be used free of charge to get in touch with her.</p> <p>If people have a suspected hearing loss, it can take on average of 10 years for them to address it.</p>

	<p>Questions and Comments were then received:</p> <ul style="list-style-type: none"> <li>• Is hearing loss age related or casued by things like work and environment? <u>Answer:</u> It is a collection of many reasons.</li> <li>• Now you have been here and tested some of us, would you come up here to the Nadder Centre again if offered the room? <u>Answer:</u> Yes we would come here.</li> <li>• What do you mean by linked with dementia? <u>Answer:</u> It is about isolation really. When you are an elderly person, you tend to stay at home.</li> <li>• Are you looking for additional venues, we may be able to find a venue for you in Bowerchalke? <u>Answer:</u> Yes it would be something we could consider. We have a year of funding form the Wiltshire commissioners now.</li> <li>• What ratio do you find are new problems in a session? <u>Answer:</u> I do run some sessions at Tedworth house for the Help the Heros, but in a usual session about half are detected as new issues.</li> </ul>
11	<p><u>Electoral Review</u></p> <p>Maggie Mulhall, AEA Consultant to the Council, gave an update on the Review of the Local Government Boundary Commission. A written handout was circulated at the meeting and is attached to these minutes for information.</p> <p>Electoral Reviews determine both the overall number of councillors on a council, and the pattern of divisions within that council. The current review would be the first review since Wiltshire Council was formed in 2009.</p> <p>It was required because 25 Divisions had a variance from the average in the size of their electorate of more than 10%, and 2 Divisions had a variance from the average of over 30%.</p> <p>The review's outcome, if implemented, would apply from the next elections in May 2021. Parliament, not Wiltshire Council, would be responsible for the final decision, following a recommendation from the Local Government Boundary Commission for England (LGBCE).</p> <p>The Councils Electoral Review Committee considered a great deal of evidence and recommended to Full Council that a council size of 99 Councillors be put forward, to enable us to keep the Area Boards working.</p> <p>The implications of having fewer councillors could be quite significant for some of our areas.</p> <p>We were told we would have a decision on 1<sup>st</sup> May, instead they have come back and said they are unsure and would like to talk further about the Area Board arrangements.</p> <p>Once we have been informed of what the number of councillors in Wiltshire</p>

	<p>Council from the next election will be, the LGBCE will hold a public consultation.</p> <p>The consultation will seek proposals from the council, towns and parishes, other community or local groups, and members of the public, on how the determined number of divisions should be drawn up.</p> <p>All submissions would be put in for consideration by the Secretary of State.</p> <p>It was hoped that the decision on the final number of Councillors would be known in September. It would go to parliament to make the final decision.</p> <p>The figures for each area was detailed in the slides which are attached to these minutes.</p> <p>There will also be a meeting for parish councils o 15 June 2018 in Trowbridge.</p> <p><u>Questions and comments included:</u></p> <ul style="list-style-type: none"> <li>• Even if we were to keep the same number of councillors, looking at the figures of the over populated areas, there would be some change. It will be a great shame if after the 8 years of working with this community area, there were changes and we are split up. <u>Answer:</u> There will be some movement. If you think that your Board is brilliant then please put your comments to <a href="mailto:committee@wiltshire.gov.uk">committee@wiltshire.gov.uk</a> The only way that the boundary commission will know is if you have told them.</li> <li>• Why are they so fixated on voter numbers rather than on the numbers of PC meetings you have to attend. <u>Answer:</u> It is one of the rules they have.</li> <li>• It depends on equitable numbers rather than our Cllr workload. Not equal for the rural to urban areas.</li> <li>• What is the closing date? <u>Answer:</u> We do not have a start date yet as they did not confirm the cllr numbers when we expected it. The Boundary Commission website tells you what the process is.</li> <li>• Could the Board Cllrs get together to propose some ideas, which could then be circulated to the Parishes for consideration and feedback? <u>Answer:</u> The Cllrs will consider this suggestion at their next meeting.</li> </ul> <p style="text-align: center;"><b>Action: Cllrs to discuss putting together some suggested proposals at next cllr meeting.</b></p>
12	<p><u>Partner and Community Updates</u></p> <p>The Board noted the written updates attached to the agenda and circulated at the meeting.</p> <p>Police Inspector Andy Fee - West Wiltshire community Policing Team, in addition to the written update circulated at the meeting, highlighted the following points:</p>

- Crime statistics have set our strategy and main priorities for the next few months
- Had to change our 2 Community Coordinators – Charlie and Leigh
- Crime patterns – no exceptions across Tisbury and Mere in particular.

Questions included:

- What was the reason for swapping the Officers? That was due to a personal matter.
- Child sexual exploitation and county lines are linked, have you seen an increase? Answer: Not in our rural areas, but in terms of Salisbury in particular, we have done quite a lot of work on county lines. People coming in to our areas to target vulnerable people and children to sell drugs to. They come in and set up a franchise. We have been working to target and break down the connections they are making with the local community. In Salisbury we have had great success. Class A drug users are meeting up with people outside of Wiltshire. With Child Sexual Exploitation, children who go missing can be exploited. There are always links to criminal exploitation and sexual exploitation. In Trowbridge we have identified a county line drug network and are doing a lot of work to break that up.

We have received mutual aid from almost every Police Force around England, who have come to help in Salisbury following the incident. This has enabled our Officers to continue with their work.

- Inspector Sparrow was at the community meeting that Cllr Jeans chaired. There is a community Policemen who was supposed to operate from the Nadder Centre, yet he has not been here for about 6 weeks. Where is he? Answer: I will take that up with the Officer. He is busy on his area and he attends our tasking meetings and provides useful information.
- The Board and community compliments the exceptional work the Officers and Partners have been doing for us all in Salisbury.

James Body – Chalke Mobile – Chairman of Bowerchalke PC

The administrative action to form the community interest of Chalke Mobile was now complete. The first 2 cells in Woodmington and Ebbesbourne Wake were now in place.

Now is the time for representatives from the other areas, across Odstock to Tollard Royal and up as far as Tisbury and Donheads St Mary to come forward to express their interest in the installation of some small cells.

A public meeting would be held on Friday 15<sup>th</sup> June at Bowerchalke village hall at 7pm. MPs John Glen and Andrew Murrison will be in attendance, so anyone interested should come along and find out more. We aim to deploy between 50

	<p>– 70 of these small cells.</p> <p><u>Questions:</u></p> <ul style="list-style-type: none"> <li>• Teffont contacted you, when can they expect to be included? <u>Answer:</u> It really depends on local champions coming forward to identify where the cells can go and 10% of the project is needed to be raised locally, the other 90% will come from central Government. Have to raise £150k but we do have seed investment funding. The system will be running a broadband of a minimum of 30mbs. There really only is one choice in some areas, that is BT, or services of BT, and that is not a good thing. Competition is good.</li> <li>• There are signs that mobile phone signals can have neurological effects on people through radiation. <u>Answer:</u> If there was a risk, the risk comes from the small devices we use as phones next to our heads, so actually having small cells locally reduces the risk. The power level is very low.</li> </ul> <p><u>Joint Strategic Assessment (JSA)</u> The Community Engagement Manager, Steve Harris noted that an update was included in the agenda pack, on all of the priorities which came out of the last JSA event. He would deliver a fuller update at a future meeting.</p>
13	<p><u>Nadder Centre</u></p> <p>Cllr Tony Deane gave an update to the Board.</p> <p>Footfall continued to increase. A Business Manager had now been appointed. This was the second one in the last few months. He had have asked to see the business plan for the centre so it could be assess before we hold another meeting. The footfall of the buildingstill needed to be increased. Please contact CEM if you know someone that would like to use the space.</p> <p>Steve Harris, CEM noted that a few meetings ago, Messams came for some funding to commission a piece of art for the Centre. There would be a final proposal in the next few weeks, this would be put to the cllrs for approval.</p>
14	<p><u>Community Safety Group</u></p> <p>Steve Harris, Community Engagement Manager noted that the minutes from the last Community Safety Group Meeting would follow. There had been no recommendations for the Board to approve, but there were plans to revitalise a neighbourhood watch for the area. Steve would circulate the information.</p>
15	<p><u>Community Area Transport Group (CATG) Update</u></p> <p>Cllr Green gave the update on this occasion, as she attended the last CATG in place of Cllr Deane.</p> <p>The CATG had recommended that the decision on funding for road safety and</p>

	<p>signage projects be discussed at the Board. The three parishes of Ansty PC, Swallowcliffe PC, and Fovant PC then gave an outline on their schemes.</p> <p>The Chairman drew attention to the late correspondence circulated by email from the Highways Officer, earlier in the day.</p> <p>Councillors discussed the matter. Cllr Deane noted that the railway station in Tisbury served people from either side of the community. Visitors would use GPS rather than looking at road signs. He noted that the Highways Officer, felt the new signs would clutter the AONB.</p> <p>The status quo must remain, the decision is made. The villages need to talk to each other and come to an agreement with each other.</p>
16	<p><u>Local Youth Network</u></p> <p>The Board heard from Sarum Sports Partnership, who had requested £2,500 of funding towards a new full size third generation artificial grass pitch 3GATP in the Salisbury Community Area.</p> <p>Cllr Church noted that this had been presented at the last LYN meeting. The pitch was state of the art facility. Children from our community area would benefit from the uses.</p> <p>Salisbury AB had already awarded £5,000 of funding also.</p> <p><b><u>Decision</u></b>  <b>The South West Wiltshire Area Board awarded £2,500 to the Sarum Sports Partnership, towards a new full size third generation artificial grass pitch 3GATP in the Salisbury Community Area. With the condition that children from the South West Wiltshire community area get to use it.</b></p>
17	<p><u>Health &amp; Wellbeing Group (HWB)</u></p> <p>Cllr Green noted that the Group had met to consider funding bids from the HWB funding pot.</p> <p>The Board noted the report and considered the recommendations for funding from the Group, as detailed in the agenda.</p> <p><b><u>Decision</u></b>  <b>The Happy Hearts project was awarded £827 from the HWB budget for 2018/19</b></p> <p><b><u>Decision</u></b>  <b>The Mere Footpath Group was awarded £300 from the HWB budget for</b></p>



	<p><b>2018/19</b></p> <p><b><u>Decision</u></b>  <b>The Alzheimer’s Support Project was deferred</b></p> <p>The application from the Chris Brown Day Centre was withdrawn.</p>
18	<p><b><u>Area Board Funding</u></b></p> <p>The Board considered three applications for funding from the Community Area Grant Scheme as detailed in the report.</p> <p>Applicants present were invited to speak in support of their applications.</p> <p>The Chairman noted that the Board Councillors had met previously to read through the applications and highlight any areas for clarification.</p> <p>Following discussion and questions, the Board then voted on each application.</p> <p><b><u>Decision</u></b>  <b>Tisbury History Society was awarded £1,000 towards Renewal of Tisbury History Society archive store. Pending further information being provided regarding the remedial works at Hindon Hall the applicant was invited to approach the Board for the remainder.</b></p> <p><b><u>Decision</u></b>  <b>Bishopstone Playgroup was awarded £289.50 towards chairs and tables.</b></p> <p>In relation to the SWCC application, it was noted that there were other smaller cricket clubs in Wilton and Dinton that could be integrated to the South Wilts club to benefit from this funding if it were to be awarded.</p> <p>Cllr Wayman noted that plenty of the young people from this community area could benefit from the facilities at the club.</p> <p>Cllr Church also noted that the location of the club was on the edge of the Wilton Community Area.</p> <p><b><u>Decision</u></b>  <b>The South Wilts Cricket Club was awarded £1,750 for the purchase of new wicket covers and repair of existing damaged ones, with the following conditions:</b></p> <ul style="list-style-type: none"> <li>• <b>There shall be an outreach to other local youth cricket teams across the SWW community area.</b></li> </ul> <p><b><u>Pub in the Hub Initiative</u></b></p>

	<p>The Board considered the proposal to contribute £500 towards this initiative.</p> <p><b><u>Decision</u></b>  <b>The South West Wiltshire Area Board allocated £500 toward the Pub in the Hub initiative.</b></p> <p><u>Fingerpost Initiative</u>  The Board considered the recommendation to ring fence a further £2,070,72 to this initiative for 2018/19.</p> <p><b><u>Decision</u></b>  <b>The South West Wiltshire Area Board ring fenced £2,070.72 towards the Fingerpost project for 2018/19.</b></p> <p>Then it considered one bid for funding from Teffont PC.</p> <p><b><u>Decision</u></b>  <b>Teffont PC was allocated £400 towards the replacement fingerpost work.</b></p>
19	<p><u>Delegated Authority</u></p> <p>The Board considered the proposal to award delegated authority to the Community Engagement Manager, as set out in the report attached to the agenda.</p> <p><b><u>Decision</u></b>  <b>In order to expedite the work of the Area Board and to deal with urgent matters that may arise between meetings, the Community Engagement Manager, in consultation with all Councillors of the Area Board (to gain a majority vote in support) may authorise expenditure to support community projects from the delegated community grants budget of up to £5,000 in total, youth projects of up to £1,000 in total, and health and wellbeing projects of up to £1,000 in total, between meetings of the Area Board.</b></p> <p><b>Decisions taken between meetings will be reported to the next meeting of the Area Board explaining why the matter was considered urgent or necessary to expedite the work of the Board and the Cabinet Member for Communities, Campuses, Area Boards and Broadband will also be kept informed of any such decisions.</b></p>
20	<p><u>Close</u></p> <p>The next meeting of the South west Wiltshire Area Board will be held on Wednesday 18 July 2018.</p>



## SOUTH WILTSHIRE COMMUNITY POLICING TEAM – JULY 2018

**Sector Head:** Insp Pete Sparrow  
**Sector Deputy:** Sgt John Hutchings

Welcome to the new South Wiltshire Community Policing Team Area Board report.

You will notice that it is a little more comprehensive than you are used to, as henceforth my intention is to include the entire South Wiltshire CPT within the body of a single report. The idea is that it will give a much greater understanding of the issues facing South Wiltshire as a whole community, rather than in isolation by single area.

My policing team operate on the basis of 'One Team' and as such, resources are moved around on a daily basis according to demand. Whilst each Police Officer and our PCSO's will still retain ownership of a given area in terms of longer term problem solving approaches, the very nature of policing and answering calls for service often dictate that officers are brought together from the wider area to respond to given circumstances. This has always been and will continue to be the case.

The document is broken down in to 5 parts:

1. Introduction
2. Staffing – listed are the Community Coordinators and PCSO's for your given area.
3. Community Engagement – How to contact us and where we are due to be.
4. Particular Issues and Crime Series
5. Items of Note

As you will all know by now, with the emergency closure of Bournehill our officers had to relocate to various sites within about 36hrs. Whilst challenging, this objective was met with enthusiasm and in the main was a seamless transition with no impact on our ability to deliver our service. Whilst our resources have been separated, the One Team ethos still remains as a golden thread throughout our various departments.

The enquiry office staff have been temporarily relocated to the Library in the city centre and this has brought a new dynamic to day to day engagement with the public who might not have otherwise had cause to attend Bournehill.

The policing operation for Operation Fairline has decreased significantly over recent weeks with many of the roles being taken by private security officers. Whilst we are working with them, these staff are independent of the police and have been employed by HM Government specifically for this operation.

As a team, we have policed both the summer Solstice celebrations and immediately after the Royal visit, both of which drew significant resources from around the County and I will add a little more detail later in the report under items 4 and 5.

**Wiltshire Police - 178 years of public service – *Primus et Optimus***



## **Staffing**

With the recent changes in CPT boundaries I am proud to say that I now have available some 147 officers and staff under my command. This does not include over 40 members of our Special Constabulary. Whilst I would love to list them all, I have limited the information to the officers that make up the immediate community team whom have the closest relationships and links with our communities, those being our Community Coordinators and PCSO's. These officers are pivotal in maintaining strong working relationships with the whole community, be it business or public and they all work exceptionally hard at doing just that.

## **Salisbury**

Pc 1792 Al Cromwell - Coordinator  
Pc 2398 Elle Darcy – Coordinator

PCSO 3951 Val BROWN - City Centre  
PCSO 8686 Gareth JAMES - City centre  
PCSO 3985 Laura KING – Southampton Road and the Friary  
PCSO 8704 Kady GREEN – Castle Road and Bishopdown  
PCSO 8195 Kim ORZA – Bemerton Heath  
PCSO 9001 Matthew MURRAY – Churchfields and St Pauls

## **South Rural**

Pc 1157 Matt HOLLAND – Coordinator  
PCSO 6227 Matt SMITH - Downton  
PCSO 6314 Nicola CLARK - Wilton  
PCSO 6150 Jenny MOSS – Laverstock and Old Sarum  
PFCSO 6025 Simon WARD – Harnham and Odstock

## **Amesbury**

Pc 1596 Lucy WILEMAN – Coordinator  
PCSO 8098 Pippa BREWER -  
PCSO 3972 Levi MORPHY – Amesbury Town  
PCSO 8922 David SIMONS – Tidworth and Ludgershall  
PCSO 3961 Tina ROYLANCE – Shrewton



## Contact Us

**Contacting Wiltshire Police by phone –101 should be used for non-emergencies such as:**

- Reporting a non-urgent crime or incident (unless the crime or incident is in progress, when you should dial 999)
- Contacting local officers
- Making us aware of policing issues in your local area (consider email as below)
- Making an appointment with a police officer
- For any other non-emergency, such as making a complaint

**999 should be used for an emergency, when a crime is happening, someone suspected of a crime is nearby, someone is injured, being threatened or in danger.**

You can also contact local officers about non-urgent issues via **email** –

**General Community Policing enquiries** - [CPTSouthWiltshire@wiltshire.pnn.police.uk](mailto:CPTSouthWiltshire@wiltshire.pnn.police.uk)

For crime updates and local policing news via email, please sign up to our **Community Messaging** scheme at –

[www.wiltsmessaging.co.uk](http://www.wiltsmessaging.co.uk)

You can also follow us on **Facebook** – search ‘Salisbury Police’ ‘Amesbury Police’ or ‘Tidworth Police’ or on **Twitter** - @SouthWiltsCPT

## Community Engagement

This is a key area of our work and comes in many forms, from our physical presence on the traditional beat or through PULSE patrols, to our mobile and cycle patrols as well of course as our social media footprint.

Wherever possible our teams are engaging with the community at every level and one of these ways is through community consultations, where a member of staff will be made available to speak to our community on an given day and time. These consultations are a great way to meet and greet my staff that are local to you and are a great way for you to raise any issues that you may have directly with an officer or PCSO at that time.

Community Consultations will take place at the following locations over coming weeks:

Bemerton Heath Community Centre  
Waitrose, Churchill Way, Salisbury

**Wiltshire Police - 178 years of public service – *Primus et Optimus***



Dates and times will be advertised through social media and community messaging so please make sure that you follow us to receive them. Further venues across the area are being sought at the moment and if you have any event or venue suggestions please let us know via the CPT e-mail listed above and we will endeavor to be there!

### Neighbourhood Tasking Meetings

The next Tidworth/Ludgershall NTG is booked for 14.30 hours on 23rd July in Ludgershall at the Town Council Office.

The next Amesbury/Durrington/Bulford/Larkhill/ Figheldean NTG is booked for 19.00 hours on 11<sup>th</sup> July in Figheldean at the village hall.

Amesbury Rural's meeting is planned for September 2018. Date to be agreed.

### Particular Issues and Crime Series

#### Salisbury City

Bike Theft – Between 27<sup>th</sup> April 2018 and 28<sup>th</sup> June 2018 there have been approximately 22 bike thefts. Two offenders have been identified from investigations. Officers are currently progressing this and shall be making positive arrests.

Commercial Burglaries – A number of commercial premises; also including churches have been broken into over the last 2 months. Through investigation a male has been arrested and charged but released by the court on Bail pending trial, however he since gone to ground and is subsequently currently wanted by police for a recall to prison. His details have been circulated to the media via Facebook and Twitter and he also appears on Wiltshire's Most Wanted.

#### Dangerous Drug Networks (DDN's)

Despite significant disruptions through proactive policing gangs are continuing to infiltrate the south of the county peddling drugs and preying on our most vulnerable within the community. The war against drugs is a long fought one and we will continue in our efforts to disrupt activity, arrest offenders and bring them to justice whilst protecting the vulnerable in the process. Any intelligence in this regard is always welcome and can be fed in to the system via speaking to an officer or member of staff, e-mail or through **Crimestoppers on 0800 555 111**.

#### South Salisbury

Ongoing multi-agency work - in Essex Square to support 'sensitive let' scheme which has been successful in tackling issues of ASB and misuse of drugs. PCSO WARD will continue to work closely with Wiltshire Council colleagues, our Teams will support with targeted patrols and enforcement action where appropriate.

**Wiltshire Police - 178 years of public service – *Primus et Optimus***



Catapult related damage and ASB – targeted patrols in response to recent report of young people using catapults to injure birds and cause damage. Hotspots include Harnham recreation ground, Town path, Middle and Lower Street.

Thefts from vehicles - Teams are carrying out targeted patrols of identified ‘hotspots’ following reports of vehicles broken into whilst parked in rural ‘beauty spot’ locations.

We’ll also continue to promote crime reduction advice, please don’t leave valuable items in vehicles when parking in these areas.

Theft of lead from buildings – We continue to receive reports of lead being stolen from buildings – typically low roofs, bay windows, porches or garages.

Our Teams are carrying out targeted patrols of hotspots – recent offences in Downton, Redlynch and Coombe Bissett.

We’ll also continue to liaise with colleagues in Hampshire and Dorset to coordinate enforcement action and visits to scrap dealers.

### **Amesbury and Tidworth**

#### **Target Patrols Tidworth/Ludgershall and surrounding areas**

##### **Dewey’s Lane – Ludgershall**

Following complaints from the Community a target patrol commenced at this location, to offer reassurance and gather intelligence. The concerns were around possible drug use at the location along with anti-social behaviour. To date 7 actions have taken place.

##### **Mughal Restaurant**

An incident occurred at this location on 23<sup>rd</sup> June. The investigation is ongoing at this time. In order to offer reassurance and deal with any further criminal activity and anti-social behaviour, a target patrol commenced on 2<sup>nd</sup> June. To date 31 actions have taken place. A multi-agency meeting has been arranged for 9<sup>th</sup> July.

##### **Tidworth**

The patrols in Tidworth continue to deal with anti social behaviour and gather intelligence around drug use. This commenced on 17<sup>th</sup> April, to date 62 actions have taken place. This will be reviewed at the next NTG meeting.



### **Chrystal Palace Farm**

On 1<sup>st</sup> May additional patrols commenced at this location due to further incidents of thefts. Patrols continued until 3<sup>rd</sup> June. In total 20 actions took place.

### **Drummer Lane**

On 8<sup>th</sup> May patrols commenced in Drummer Lane following complaints of anti-social behaviour and possible drug use. The patrols continued until 2<sup>nd</sup> June. In total 28 actions took place.

### **Target Patrols Amesbury and surrounding areas**

#### **Barleycroft, The Common Shrewton**

On 8<sup>th</sup> June a target patrol was instigated at the location due to the farm being targeted. To date 23 actions have taken place..

#### **Mill Pond, Figheldean**

Due to the recent hot weather, issues at the Mill Pond have come early this year. Local residents have contacted the Police due to anti-social behaviour occurring at the location. A targeted patrol was instigated on 27<sup>th</sup> June to offer reassurance to local residents, to deal with any criminal activity. Complaints so far relate to boy racers speeding up and down Mill Road, mud throwing at resident's vehicles. Also, reports of large volumes of cars being left at the location whilst occupants use the mill pond. On Monday 02<sup>nd</sup> July a multi-agency meeting took place at the location. Present were local residents, Wiltshire Police, Parish Council. Further updates will follow. To date, 19 actions have taken place.

#### **Glebe Hall, Winterbourne Earls**

On 4<sup>th</sup> June a target patrol commenced at the location following complaints of anti-social behaviour caused by youths arriving in cars, wheel spinning, littering and causing damage to bollards etc at the location. To date 22 actions have taken place.

On 30<sup>th</sup> June a suspect has been identified for the antisocial behaviour in the car park of GLEBE HALL. Suspect and parents spoken to. After consulting with the Winterbourne Parish council, they decided that they did not wish to pursue with a prosecution for the damage caused to the bollards in the car park. Suspect has been advised that their presence in this carpark is unwelcome, and they have been advised to stay away. Since this warning, no further reports of vehicle related anti social behaviour. For this reason the patrol has been closed down on 03<sup>rd</sup> July.

### **Items of Note**

**Police and Fire Community Support Officer (PFCSO)** - Trials have started in partnership with Wiltshire and Dorset Fire and Rescue Service we have started a trial whereby PCSO Simon Ward (who also

**Wiltshire Police - 178 years of public service – *Primus et Optimus***





happens to be a retained fire officer) will be on patrol in a joint capacity enabling him to respond to both police and fire calls for service whilst on duty. Further details will be circulated at the next area board.

### **Summer Solstice**

The Solstice operation in the days leading up to the 21st saw a record reduction in policing activity for the event, with the emphasis being placed back to English Heritage to find security staff for the same. This proved very successful and a happy Solstice was had by all. Again, a first for Stonehenge was that there were no arrests at all during the event.

Woodhenge was also robustly policed following concerns from locals and partner agencies about the possibility of a Free Festival taking place and the decision was made to close Fargo Road in order to contain any further escalation of the gathering and allow for the safety of those already located there (prior to the closure) who were intoxicated and wandering around the road. This closure was key to the disruption of the planned event which despite party goers best efforts did not occur. Public engagement with those present continued throughout the 48hrs and it was apparent from the many comments received from revellers that their views of the police were greatly and positively influenced during this time. Correspondence from locals subsequently also praised the efforts my officers who worked tirelessly for extended shifts in the maintenance of communication and public order in very hot and tiring conditions.

Feedback from residents:

*"Thank you so much for all the efforts of Wilts police. Their presence and blockades resulted in an evening that one barely noticed as a resident- please do pass on my (and fellow residents) thanks for all their efforts. They clearly had a tough task, but remained professional, polite and courteous throughout. I hope this sets the precedent for future 'solstices'! Well done!"*

### **Royal Visit**

Salisbury City welcomed the Duke and Duchess of Cornwall on Friday 22<sup>nd</sup> June and the policing operation for this was significant; with 45 officers deployed across the city in various roles from search to cordons to ensure the safety of the future King. Officers who were involved with the immediate actions following the Novichock incident were honoured to meet the royal couple and share their stories. Without exception both were events that they will remember throughout their service and beyond.

Visible patrols and public engagement in Salisbury City Centre. This priority focus is on anti-social behaviour, street drinkers and disorder. CPT are working in partnership with Venture Security, BID and pub watch. It also aims to speak with rough sleepers, some of which are vulnerable in order to check on their welfare and signpost them to other agencies via [www.streetlink.org.uk](http://www.streetlink.org.uk) which triggers intervention from the local authority/outreach service who can provide help and assistance.

**Wiltshire Police - 178 years of public service – *Primus et Optimus***



Officers are also making regular welfare visits to various addresses within the City Centre and the immediate surrounding area of vulnerable residents who are drug and alcohol dependent. Some of these addresses have been targeted by drug gangs from out of the area. Officers take positive action by way of arrest.

### Speed enforcement checks –

Since May, our teams have been focusing on supporting our Community Speed Watch volunteers. Areas for targeting are allocated for every 2 week period and are selected using data from active CSW schemes.

Salisbury. Bishopstone, Broadchalke, Dinton, Quidhampton and Wilton, Allington, Cholderton, Middle Woodford, Winterbourne Earls, Berwick St James, Collingbourne Kingston, Porton, Shrewton, Durrington, Steeple Langford and Larkhill have all been targeted so far.

We will continue to publicise these checks via social media.

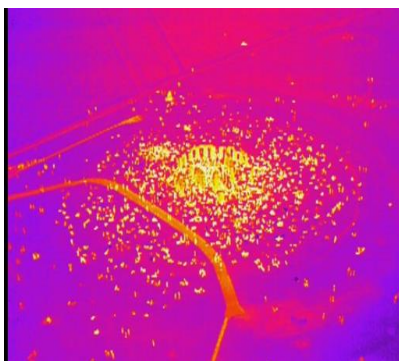
### Selection of pictures from recent weeks.....

From L to R

Speed Checks / Cadets on parade / Mounted Section get new recruit / Seized vehicle no insurance / Meeting children at the leisure centre / Cadets make ready to receive Royals / First responders meet Royals / Solstice / Solstice by IR / Solstice / Speed enforcement



**Wiltshire Police - 178 years of public service – *Primus et Optimus***



**Pete Sparrow**  
**Sector Inspector South Wiltshire**

**Wiltshire Police - 178 years of public service – *Primus et Optimus***



## **South West Wiltshire Area Board Report – 18<sup>th</sup> July 2018.**

### **Arson prevention**



A significant number of the fires attended by the Fire and Rescue Service every year are started deliberately.

Most are small, such as bin, rubbish or grass fires, but even these can escalate quickly and become life-threatening. On more than one occasion, someone setting fire to a bin has led to an entire building being destroyed after the blaze spread.

We work with partners, including the Police and the local authorities, to tackle arson in areas where a particular problem has been identified.

### **Top tips**

To reduce the risk of your property being affected by arson, you should:

- Only put your wheelie bin to the front of your property on the morning of collection. Store it out of sight the rest of the time.
- Don't overfill your wheelie bin and make sure the lid will close.
- Store rubbish away from any building, while keeping it within the boundaries of your property.
- Make sure your doors, windows, gates, walls and fences are effectively secured, especially at night and if you're away from the property.
- Park vehicles in a well-lit place and off the road where possible. Always keep your car locked.

### **How you can help**

If you know of someone who sets fires deliberately, you can call Crimestoppers anonymously on 0800 555 111.

## Bonfires and garden safety



Bonfires are very common in the summer, but they can get out of control very easily. If you want to burn off garden waste, here's some safety advice:

- Site any bonfire well away from buildings, fences, trees and garden structures.
- Have a garden hose to hand in case the fire starts to get out of control.
- Don't light a bonfire on a windy day, as it could flare up more than you expect.
- Be courteous to your neighbours – if you're planning a substantial bonfire, let them know, and stay with it at all times to ensure that it remains safe.
- If you're intending to have a large bonfire, please advise Fire Control on 0306 799 0019 or use our [on-line form](#) – we often receive emergency calls from people who can see lots of smoke, and it helps us to know where this could be a controlled burn.
- Never use flammable liquids such as petrol or paraffin to start a bonfire.

### Garden equipment

- Refill garden heaters, petrol mowers etc in the open air and don't smoke while doing so.
- Deal with any fuel spillage by allowing it to evaporate, soak into the ground, or cover with an absorbent material.
- Take care when lighting garden heaters and never move when lit. Keep away from flammable materials, such as awnings or laundry lines.
- When using candles or flares, make sure they are firmly packed into the ground.
- Keep children and pets away from naked flames and hot lanterns.
- Make sure any candles, flares and lanterns are fully extinguished when you have finished with them.

## **Safe and Well Visits- Home safety**

Natasha Viljoen is the Safe and Well Advisor that covers Mere and Tisbury and Martyn Jones is the Safe and Well Advisor that covers Wilton. Please contact, [natasha.viljoen@dwfire.org.uk](mailto:natasha.viljoen@dwfire.org.uk) or [martyn.jones@dwfire.org.uk](mailto:martyn.jones@dwfire.org.uk) to arrange for a talk to your group or an individual visit.

A Safe and Well visit is **FREE** and normally lasts about one hour covering topics such as:

- Using electricity safely
- Cooking safely
- Making an escape plan
- What to do if there is a fire
- Keeping children safe
- Good practice – night time routine and other points relevant to you
- Identifying and discussing any further support the occupier may need

If you have thatch property, are living alone, have a young family, are over 65 or a smoker please get in contact with us. We want to help make you safer in your own home. If you or someone you know has mobility or sight and hearing impairments, please suggest a Safe and Well visit.

Visit <http://www.dwfire.org.uk/news/new-name-new-contact-details-same-service/> to book one.

## **Response**

### **Incidents**

#### **April 2018**

<b>Category</b>	<b>Wilton</b>	<b>Tisbury</b>	<b>Mere</b>
False Alarm	3	3	0
Fire	2	4	4
Co-responding	0	0	1
Special Service	4	1	0
<b>Total</b>	<b>8</b>	<b>8</b>	<b>5</b>

## May 2018

Category	Wilton	Tisbury	Mere
False Alarm	6	2	7
Fire	1	0	2
Co-responding	0	0	0
Special Service	2	1	0
<b>Total</b>	<b>9</b>	<b>3</b>	<b>9</b>

The board have taken particular interest in Co-responding, especially since the changes could have a significant impact on local availability. Because of this, Co-responding incidents have been included on their own.

## Availability of RDS appliances %

April 2018	Appliance	Day (06:00 - 18:00)	Night (18:00 - 06:00)	Total
% Available	KT32P1 Wilton	65.6%	87.1%	<b>76.7%</b>
% Available	KT33P1 Tisbury	38.7%	95.0%	<b>66.8%</b>
% Available	KT34P1 Mere	65.9%	94.2%	<b>80.0%</b>

May 2018	Appliance	Day (06:00 - 18:00)	Night (18:00 - 06:00)	Total
% Available	KT32P1 Wilton	52.4%	79.1%	<b>65.8%</b>
% Available	KT33P1 Tisbury	54.1%	96.7%	<b>75.4%</b>
% Available	KT34P1 Mere	58.5%	89.7%	<b>74.1%</b>

## Community Engagement

Dorset & Wiltshire Fire and Rescue Service provides a free service called a Safe and Well visit. We will visit a person's home by appointment and discuss any safety issues in the home. We will also have a conversation about improving an individual's health and well-being.





If you or someone you know need a smoke alarm, some advice or are worried about what to do in an emergency, contact us for a free Safe and Well visit;  
<http://www.dwfire.org.uk/safety/safe-and-well-visits/>

### **Community Safety Plan**

DWFRS Community Safety Plan 2017-2021 outlines our plans for the future. It explains the diverse services we provide and how we plan to improve and deliver them over the four-year period. The plan can be found on the DWFRS website  
<http://www.dwfire.org.uk/community-safety-plan/>

Darren Nixon  
Station Manager  
South West Wiltshire (Warminster, Westbury, Mere & Tisbury)  
Email: [darren.nixon@dwfire.org.uk](mailto:darren.nixon@dwfire.org.uk)  
Tel: 01722 691238  
Mobile: 07860 345294



## Wiltshire Council Information Item

<b>Subject:</b>	<b>Becoming a Foster Carer</b>
<b>Web contact:</b>	<a href="http://www.wiltshire.gov.uk/fostering">http://www.wiltshire.gov.uk/fostering</a>

Wiltshire Council needs to recruit foster carers of all types, including specialisms. Foster carers are needed in all areas of the county, although it is recognised that the main priority is to recruit in the main towns to the north and west of the county (Chippenham and Trowbridge) and to the south (Salisbury). Most looked after children come from these areas and so generally local foster carers are needed to support children continuing at school and college and to facilitate family contact more easily.

Foster carers are ordinary people and so they are likely to be living in any part of the county, in any community. To become an approved Wiltshire foster carer you need to:

- Be at least 21 years old (although they can apply from the age of 18)
- Have a spare bedroom big enough for a child or young person to use
- Be a full-time resident in the UK or have leave to remain
- Be able to give the time to care for a child or young person on a full or part-time basis

Foster Carers are paid an allowance based on the age of the child they look after and a Skill Fee dependent upon their skills and experience.

Recent research carried out at Bristol University with children in care shows how important it is that children have someone they can trust, who is interested in them and that:

*“Living with someone that you have a good and trustful relationship with is the key to a happy and effective placement”*

**Saving Grace** is the story of a young person who was fostered, and the positive impact fostering had on her life, and on the life of her foster family.

To find out more about fostering in Wiltshire please visit:

<http://www.wiltshire.gov.uk/fostering>

Or phone 01225 716510 (office hours) or 0845 6070888 (out of hours)

**Our next information evenings are:**

**29 May, 7pm - 8pm, County Hall, Trowbridge**  
**26 June, 7pm – 8pm, County Hall, Trowbridge**  
**24 July, 7pm – 8pm, County Hall, Trowbridge**  
**25 September, 7pm – 8pm, County Hall, Trowbridge**  
**30 October, 7pm – 8pm, Five Rivers Health and Wellbeing Centre, Salisbury**

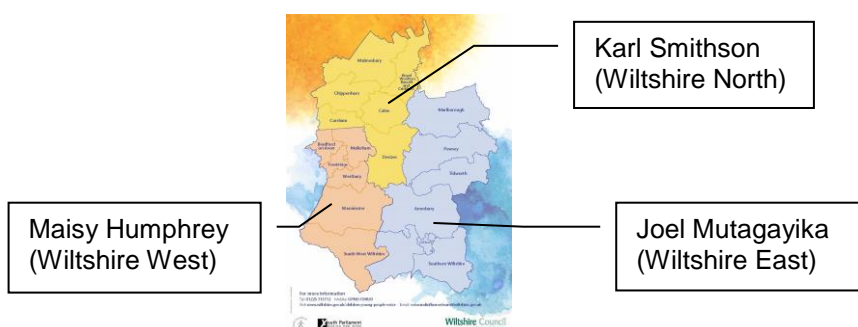


# Wiltshire Council Information Item

<b>Subject:</b>	<b>UK Youth Parliament Elections and Activity</b>
<b>Officer contact:</b>	Judy Edwards <a href="mailto:judy.edwards@wiltshire.gov.uk">judy.edwards@wiltshire.gov.uk</a> 07900 759830

## 1. UK Youth Parliament 2018 elections and activity

UK Youth Parliament provides opportunities for 11-18 year olds to use their elected voice to bring about social change through meaningful representation and campaigning. Members of Youth Parliament (MYPs) are elected annually in every part of the UK. There are currently 349 MYPs. MYPs are encouraged to meet with MPs and local councillors, organise events, run campaigns, make speeches, hold debates and ensure that the views of young people are listened to by decision makers. The most important aspect of any MYP's job is to make sure they represent the views of the young people in their constituency. Wiltshire has three seats on the UK Youth Parliament, with the term of office commencing on 1 March. Information about Wiltshire's MYPs for 2018/19 can be found [here](#).



The role of the MYP is increasingly being recognised at a local and national level. UK Youth Parliament seeks opportunities for MYPs to meet regularly with government ministers, members of the opposition and civil servants. UK Youth Parliament also works to promote the role and influence of MYPs to service providers, e.g. the transport industry and health services.

## 2. Youth Parliament programme

MYPs come together for an Annual Conference each July at which they debate manifesto points and vote on **ten** issues to take to a national [Mark Your Mark campaign](#). Schools and youth groups are encouraged to register to take part in debate and discussion about these 10 issues, and then vote for those which are most pertinent to them. Almost 1m ballots are cast each year. The top **five** issues are then taken to a debate in the [House of Commons](#) which is chaired by the Speaker of the House. Following these debates, MYPs vote to decide which **two** issues should become the UK Youth Parliament's priority campaigns for the year ahead.

## 3. 2018 campaigns

The two priority campaigns for 2018 are: i) [Votes at 16 in all public elections](#) and ii) [A curriculum for life](#).

Wiltshire's MYPs have also agreed a set of their own local priorities which they would like to progress in partnership with elected members:

- Bus passes for those under 18
- Whole county litter picking days to include all Wiltshire schools

## ***Wiltshire Council Information Item***

- Railway station in Devizes
- Use of new materials for road repairs – plastic roads
- Increase special school provision
- Revisit youth centre provision

### **4. Wiltshire Assembly of Youth**

MYPs are expected to take a leading role in the Wiltshire Assembly of Youth (WAY). WAY is a forum for young people in Wiltshire to express their experience of the needs of children and young people, give their views on services, and offer consultation over policy.

### **5. Meet your MYP**

Councillors are encouraged to contact their MYP, to introduce them to the work of the Council, discuss how the 2018 campaigns can be supported, and encourage wider debate and discussion with young people at Area Board and Full Council level. To make contact and for more information, please contact:  
[judy.edwards@wiltshire.gov.uk](mailto:judy.edwards@wiltshire.gov.uk), 07900 759830.

## **Wiltshire Council Information Item**

<b>Subject:</b>	<b>Special Schools Consultation</b>
<b>Web contact:</b>	<a href="http://wiltshire.objective.co.uk/portal/education/special_school_provision_in_wiltshire">http://wiltshire.objective.co.uk/portal/education/special_school_provision_in_wiltshire</a>

Over the last few years we have seen significant growth in housing in Wiltshire and this has meant that all our special schools for children and young people with special educational needs and disabilities (SEND) are now full.

We are likely to need at least 220 new special school places by 2026. In the north of Wiltshire this means creating at least 70 additional places for children with complex needs.

We have committed investment to provide these additional places in the north and now it's important to get this right for all our children and young people with complex needs both now and in the future. There are several options to explore how we provide for pupils with special needs in the future and we are encouraging people to have their say by taking part in the consultation which is on the website until 31 July 2018.

[http://wiltshire.objective.co.uk/portal/education/special\\_school\\_provision\\_in\\_wiltshire](http://wiltshire.objective.co.uk/portal/education/special_school_provision_in_wiltshire)





**July 2018**
**Overview**

NHS Wiltshire Clinical Commissioning Group (CCG) is responsible for commissioning a broad range of healthcare for the population of Wiltshire. We are led by experienced local GPs drawn from across the county, who provide clear clinical leadership to the big decisions affecting the future of healthcare provision in Wiltshire, carefully tailored to meet the differing needs of people locally.

Our vision is to ensure the provision of a health service which is high quality, effective, clinically-led and local. We are committed to delivering healthcare that meets the needs of Wiltshire people, to consult and engage with our population to enable them to be involved in decisions made about health services and to deliver those services to people in their own homes or as close to home as possible.

**The right healthcare, for you, with you, near you**
**News from the CCG!**
**Dad Pad app launched to support new dads**

An app to support new dads and dads-to-be in Wiltshire, BaNES and Swindon has been launched containing practical information and advice on topics ranging from changing nappies, feeding and how babies like to be held. The Dad Pad aims to support new dads and help them to feel more confident about fatherhood.



Lucy Baker, Programme Director for Maternity - the B&NES, Swindon and Wiltshire Maternity Transformation Partnership explains: "We've had loads of conversations with dads, who have told us that they want information on how to care for their new babies, so that they can be more involved right from the start. The Dad Pad has practical advice which dads can access quickly and easily to help support them in caring for their new born."

The Dad Pad was previously launched in Wiltshire as an online and printed leaflet. It is now available in an updated version as a free to download app. Visit the Dad Pad website to download the app: [www.thedadpad.co.uk/app](http://www.thedadpad.co.uk/app)

**Northlands Surgery nominated for Surgery of the Year Award!**

As part of the national General Practice Awards 2018, Northlands Surgery in Calne has been nominated for The People's Choice Award: Surgery of the Year.

The award offers the general public the chance to give their thanks and show appreciation for their local healthcare team. Northlands Surgery is one of 81 Practices nationwide that have been nominated and public voting is now in full swing until 10 August 2018.



Alison Ingham, Practice Manager at Northlands Surgery comments, "It is an absolute thrill that Northlands has been nominated for this prestigious award. Everyone in the Practice Team works tirelessly to provide outstanding care for our patients and I think it is wonderful for our staff to have been recognised in this way."

Voting is now open and people have until 10 August 2018 to show their support for Northlands Surgery in one of two ways:

- Free online via the General Practice Awards website: <http://www.generalpracticeawards.com/the-awards/peoples-choice-award/> or

- By texting **CHOICE51 to 60777** (standard text message rates apply).

The final three shortlisted surgeries will be announced on 3 September and will be invited to attend this year's Awards Event, which takes place on 30 November in London.

To find out more, visit [www.generalpracticeawards.com](http://www.generalpracticeawards.com)

---

## Improving services for the victims and survivors of sexual assault and abuse

NHS England has published the [Strategic direction for sexual assault and abuse services](#), which sets out what is needed to improve services and consequently patient experience for those who have experienced sexual assault and abuse.

Developed with a range of partner organisations, as well as the victims and survivors of sexual assault and abuse, the Strategic direction takes into account a lifelong pathway of care for survivors. It also outlines how services need to evolve and work together to ensure that as much as possible can be done to safeguard individuals and support them at times of crisis and at the point of disclosure.

---

## News archive

Read more news from Wiltshire CCG in our [news archive](#).

---

## Have your say

[Back to top](#)

### Gluten-free foods on prescription

In February 2018 the Department of Health and Social Care (DHSC) announced its decision to nationally restrict the prescribing of gluten-free foods. This is in response to the public consultation in 2017 on the 'Availability of gluten-free foods on NHS prescription'.

Wiltshire CCG's current policy permits the prescribing of gluten-free staple foods for patients with a diagnosis of coeliac disease and/or dermatitis herpetiformis, with the following guidance:

- Gluten-free prescribing should focus on enabling people with coeliac disease to access gluten-free staple foods, (bread, bread mix, flour, flour mix and pasta) free of charge on NHS prescription, as part of a healthy balanced diet.
- Sweet biscuits and cakes should not be prescribed based on the grounds of supporting healthy lifestyles and the fact that gluten-free products are available at competitive prices in supermarkets.
- Any gluten-free foods prescribed for patients without a confirmed diagnosis should not be prescribed.

Between 1 April 2017 and 31 March 2018, gluten-free foods on prescription cost NHS Wiltshire £241,487.

**Wiltshire CCG is asking the public, patients and clinicians to have their say by completing a survey on two proposed options that will change the prescribing approach to gluten-free foods in Wiltshire, in line with National Institute of Care and Excellence (NICE) guidelines.**

[Visit our website to find out more and to complete the survey.](#)

[Stay well this summer](#)

To help you, your friends and family stay well this summer, we've teamed up with Wiltshire Council to produce this [handy booklet](#). With lots of tips on how to enjoy the sun safely, advice on what to keep in your medicine cabinet and information on healthy living it's this summer's latest must-read!

For more information and top tips for a safe summer, visit [www.wiltshireccg.nhs.uk/our-campaigns/safe-summer](http://www.wiltshireccg.nhs.uk/our-campaigns/safe-summer)



NHSWiltshireCCG



@NHSWiltshireCCG



NHS Wiltshire CCG



# Area Board Update

## July 2018

### New Provider

Following a recent tender process, a new provider has been awarded the Healthwatch Wiltshire contract. Help and Care, a charity based in Bournemouth, works across south central England and support 8 local healthwatch contracts.

The new contract began on the 1st June and two of the staff team transferred over to Help and Care. We are now in the process of locating a new local office, setting up governance and writing the workplan based on what local people have told us.

### New report!

Our Impact Report for 2017/18 has just been published. This highlights some of the work carried out over the last year by our previous provider, Evolving Communities and sets out our priorities for 2018/19. These are:

1. Mental health, including dementia - engaging with people with mental health issues to find out what issues they face.
2. Children and Young People - engaging children and young people to ensure their views are listened to and heard
3. Social Care - engaging with patients, their carers and staff to find out their experiences of receiving and delivering care and to monitor the impact of changes to Wiltshire Council's Charging policy
4. Primary Care - ensuring that local people are involved with and informed on plans for the development of primary care services.



The full report can be viewed here: <https://www.healthwatchwiltshire.co.uk/reports.html>

### We are recruiting!

Are you passionate about making a difference, through good writing and social media campaigning?

Then join our small team as Healthwatch Officer-Communications lead.

Full details and application pack can be found here:

<https://www.helpandcare.org.uk/work-with-us/vacancies/>





## Local Health and Wellbeing Group Record

Area	South West Wiltshire Health and Wellbeing Group				
Date	4/7/2018	Times	1 - 2.30pm	Venue	Nadder Centre, Tisbury
Present	Cllr Jose Green (Chair, Wiltshire Councillor), Steve Harris (Wiltshire Council, Community Engagement Manager), Stephen Ryan (Alzheimer's Society), Lindsay Kinlin (GP Locality Lead), Caiti Buck (Health Trainer), Diana Zugravu (Wiltshire Council, Assistant Commissioner)				
Apologies	Stacey Plumb (Healthwatch Wiltshire), Tim Mason (Alzheimer's Society), Pippa Webster (Age UK), Natasha Viljoen (Dorset & Wiltshire Fire & Rescue Service)				
Agenda Items					
1	Welcome and Introductions/Apologies				
2	Notes/actions from meeting on 2 May 2018				
3	Funding update / Area Board priorities				
4	Update from Heat & Eat event on Monday 21 May 2018				
5	Dementia Action Alliance update				
6	Drug/alcohol outreach support update				
7	Wellbeing through nature				
8	NHS CCG funding for mental health and wellbeing in Wiltshire				
9	Carers' strategy				
10	Obesity strategy				
11	Updates from group members				
12	AOB				
Decisions/Actions					
1	In her apologies Stacey Plumb advised that there have been a few changes at Healthwatch Wiltshire recently. The contract was awarded to a new provider, Help and Care from the 1st June. Stacey and her colleague Julie transferred over to the new provider and are in the process of setting up governance, workplan etc.				
2	No feedback from Alzheimer's Support. Singing group no longer taking place in Tisbury. Successful Side by Side match in the local area. <b>ACTION – Steve to send activities directory to Lindsay/Caiti</b>				
3	£6,573 remaining in Health and Wellbeing budget for 2018/19. Lindsay advised CCG willing to support local softer health approaches. GPs encouraged to work at scale as groups of local practices. Examples, support group for fibromyalgia and prostate cancer. Would like to improve diagnosis for dementia. May have funding available through CCG; possibility for joined up approach to tackle priorities for AB and CCG? Steve to meet with Lindsay to discuss further on 6.7.18.				
4	Steve has asked for feedback from event from Anybody Can Cook.				
5	Dementia Friends sessions run in Wilton and Donhead St Mary. Safe Places to be rolled out in Wilton shopping village.				

6	Feedback from the last H&WB group meeting has been provided to the Community Safety and Substance misuse team re. suggesting Mere as an outreach location.
7	<b>ACTION – Steve to circulate details</b>
8	<b>ACTION – Steve to circulate details</b>
9	Caiti advised carers organisation runs event through GP in Hindon twice a year. <b>ACTION – Steve to circulate details</b>
10	Meeting to take place on 5.7.18; Steve to provide update in due course.
11	Caiti doing drop in every other Tuesday at Nadder Centre, taking referrals. Two days a week.
Recommendations to Area Board	
1	

DRAFT



<b>Report to</b>	South West Wiltshire Area Board
<b>Date of Meeting</b>	18/07/2019
<b>Title of Report</b>	Community Area Grant funding

**Purpose of the report:**

To consider the applications for funding listed below

<b>Applicant</b>	<b>Amount requested</b>
<b>Applicant:</b> Salisbury & South Wilts District Scout Council <b>Project Title:</b> Dennis Marsh House - Improvements  <a href="#">View full application</a>	£5000.00
<b>Applicant:</b> Ebbesbourne Wake village Hall Management Committee <b>Project Title:</b> Defibrillator for Ebbesbourne Wake  <a href="#">View full application</a>	£1050.00
<b>Applicant:</b> Compton Chamberlayne Village Hall <b>Project Title:</b> Compton Chamberlayne Village Hall Guttering Repair  <a href="#">View full application</a>	£650.00
<b>Applicant:</b> Studio Theatre <b>Project Title:</b> Studio Theatre Extension  <a href="#">View full application</a>	£10000.00
<b>Applicant:</b> Weaveland Road Allotment Society <b>Project Title:</b> Weaveland Road Allotment Society New Community Shed  <a href="#">View full application</a>	£600.00
<b>Applicant:</b> BISHOPSTONE VILLAGE HALL <b>Project Title:</b> Bishopstone Village Hall Car Park  <a href="#">View full application</a>	£5000.00
<b>Applicant:</b> CH4LKE Mobile <b>Project Title:</b> Community mobile and broadband signal - CHALKE MOBILE Community Interest Company	£5000.00

<a href="#">View full application</a>	
<b>Applicant:</b> CHALKE VALLEY SHORT MAT BOWLS CLUB <b>Project Title:</b> Chalke Valley Short Mat Bowls Club Replacement Mats <a href="#">View full application</a>	£1360.00

## 1. Background

Area Boards have authority to approve Area Grants under powers delegated to them. Under the Scheme of Delegation Area Boards must adhere to the [Area Board Grants Guidance](#)

[The funding criteria and application forms](#) are available on the council's website.

## 2. Main Considerations

2.1. Councillors will need to be satisfied that funding awarded in the 2018/2019 year is made to projects that can realistically proceed within a year of it being awarded.

2.2. Councillors must ensure that the distribution of funding is in accordance with the Scheme of Delegation to Area Boards.

2.3. Councillors will need to be satisfied that the applications meet the Community Area Board grants criteria.

## 3. Environmental & Community Implications

Grant Funding will contribute to the continuance and/or improvement of cultural, social and community activity and wellbeing in the community area, the extent of which will be dependent upon the individual project.

## 4. Financial Implications

Financial provision had been made to cover this expenditure.

## 5. Legal Implications

There are no specific legal implications related to this report.

## 6. Human Resources Implications

There are no specific human resources implications related to this report.

## 7. Equality and Inclusion Implications

Community Area Boards must fully consider the equality impacts of their decisions in order to meet the Council's Public Sector Equality Duty.

Community Area Grants will give local community and voluntary groups, Town and Parish Council's equal opportunity to receive funding towards community based projects and schemes, where they meet the funding criteria.

## 8. Safeguarding Implications

The Area Board has ensured that the necessary policies and procedures are in place to safeguard children, young people and vulnerable adults.

## 9. Applications for consideration

Application ID	Applicant	Project Proposal	Requested
<a href="#">2937</a>	Salisbury & South Wilts District Scout Council	Dennis Marsh House - Improvements	£5000.00
<p><b>Project Description:</b> Our project is to upgrade and improve facilities at Dennis Marsh House. 1 - upgrade the toilet facilities to comply with current standards particularly in relation to accessibility and by making better use of space available. 2 - provide an extension to the building to provide storage facilities for tables chairs camping and other Scouting equipment. 3 - surfacing one of the gravelled areas to provide additional parking and activities area.</p> <p><b>Input from Community Engagement Manager:</b> The applicant reports that the scouting district includes many of the parishes in the South West Wiltshire board area. There are Beavers, Cubs and Scouts at Tisbury and likewise at Wilton together with an Explorer Scout Unit. They are able to draw members from surrounding areas. At Wilton there are around 70 young people, who are supported by adult volunteers numbering around 20. At Tisbury there are around 60 young people supported by about 10 volunteer adults. Tisbury is one of the newest groups in the district and are continuing to grow with the fairly recent addition of Scouts to allow progression from Cubs. Volunteer leaders from groups not in this Boards area have been supporting the growth of the Tisbury Group in relation to leader training and filling in on meeting nights where there has been a shortage of a leader. Dennis Marsh House is the District HQ and therefore what it provides are available to those groups mentioned above.</p> <p>This is a capital project and the applicant has committed to paying 50% of the project cost, meeting the community area grant criteria.</p> <p><b>Proposal</b> That the Area Board determines the application.</p>			

Application ID	Applicant	Project Proposal	Requested
<a href="#">2948</a>	Ebbesbourne Wake village Hall Management Committee	Defibrillator for Ebbesbourne Wake	£1050.00
<p><b>Project Description:</b> To provide a Defibrillator for Ebbesbourne Wake</p> <p><b>Input from Community Engagement Manager:</b> The applicant reports that the whole community will benefit from the knowledge that help is available if they have a heart attack. Training will be provided which will increase awareness of First Aid.</p>			

This is a capital project and the applicant has committed to paying 50% of the project cost, meeting the community area grant criteria.

**Proposal**

That the Area Board determines the application.

Application ID	Applicant	Project Proposal	Requested
<a href="#">2961</a>	Compton Chamberlayne Village Hall	Compton Chamberlayne Village Hall Guttering Repair	£650.00

**Project Description:**

The guttering along the rear side of the hall needs repairing as the wooden fascia boards underneath have rotted through making the whole gutter shaky and unstable. We need to replace the wooden supporting boards and cover them with a UPVC fascia for protection then install a new gutter and down-pipe. The same work was carried out to the front side of the hall some time ago and has proved very effective.

**Input from Community Engagement Manager:**

The applicant reports that the hall sits right in the centre of the village and is the main focal point for community activities. It hosts a variety of events through the year to bring people together and encourage social inclusion.

This is a capital project and the total project cost is under £1,000, meeting the community area grant criteria.

**Proposal**

That the Area Board determines the application.

Application ID	Applicant	Project Proposal	Requested
<a href="#">2940</a>	Studio Theatre	Studio Theatre Extension	£10000.00

**Project Description:**

Award-winning Studio Theatre founded in 1952 constructed its own purpose built theatre which was completed in 2006. Membership includes a thriving youth theatre now at full capacity and with a waiting list. The building is also hired by schools and community groups. But it does not meet current legislation requirements regarding changing facilities for young people which the extension will provide. Phases one and two - foundations and steelwork are complete. Phase three - External fabric envelope has just started and will use up our remaining funds. We are seeking a grant towards the cost of Phase four - the internal fitting out estimated a 61600.00

**Input from Community Engagement Manager:**

The applicant reports that the Studio Theatre has a thriving youth theatre with a waiting list for membership. The adult theatre provides a sense of well-being to those who take part and those who make up the audiences. Youth and adult

organisations in South Wiltshire can and do benefit by making use of the building - eg Scout Association annual pantomime.

This is a capital project and the applicant has committed to paying 50% of the project cost, meeting the community area grant criteria. Clarification on income/expenditure figures is taking place at the time of this report being produced.

**Proposal**

That the Area Board determines the application.

Application ID	Applicant	Project Proposal	Requested
<a href="#">2932</a>	Weaveland Road Allotment Society	Weaveland Road Allotment Society New Community Shed	£600.00

**Project Description:**

To replace old community shed on the Weaveland Rd Allotments. This is for the use of allotment holders without sheds to store tools and equipment as well as to store the communal lawn mower power tools and other equipment used by the committee and other members for site maintenance. The existing shed is too small and in bad repair.

**Input from Community Engagement Manager:**

The applicant reports that a sturdy secure well maintained shed will ensure tools and other equipment are stored safely and kept in good condition.

This is a capital project and the total project cost is under £1,000, meeting the community area grant criteria.

**Proposal**

That the Area Board determines the application.

Application ID	Applicant	Project Proposal	Requested
<a href="#">2893</a>	BISHOPSTONE VILLAGE HALL	Bishopstone Village Hall Car Park	£5000.00

**Project Description:**

The hall has a 700 sq m car park with a hard-core surface laid down over 30 years ago. This surface has numerous puddles in wet weather and is very uncomfortable to walk across. The hall can therefore not be hired out for up-market events e.g wedding receptions and some of the elderly villagers have stopped visiting the hall as they find crossing the car park too difficult. In order to maintain the village hall as the centre of the community available to all it is essential that the car park is resurfaced and equipped with proper drainage.

**Input from Community Engagement Manager:**

The applicant reports that the whole population of the village will be the beneficiaries of this long-term project, with the elderly and socially deprived who are unable to travel to Salisbury specifically standing to gain. Indirect beneficiaries

include people in neighbouring villages in the Chalke Valley and beyond who also attend many of the events held in the hall.

This is a capital project and the applicant has committed to paying 50% of the project cost, meeting the community area grant criteria.

**Proposal**

That the Area Board determines the application.

Application ID	Applicant	Project Proposal	Requested
<a href="#">2963</a>	CH4LKE Mobile	Community mobile and broadband signal - CHALKE MOBILE Community Interest Company	£5000.00

**Project Description:**

Mobile and broadband coverage in the Chalke Valley is poor. This has created a digital divide disadvantaging businesses and leaving people and families isolated. This project will provide the foundation for a community owned mobile infrastructure. The funds will be used to purchase two Small Cells. These cells will enable everyone within their reach - businesses and families alike - to have full mobile and broadband capability. The community will own the infrastructure through the Ch4like Mobile CIC - there is no risk of it being taken away.

**Input from Community Engagement Manager:**

The applicant reports that encouraging people to move to the area, supporting the creation and growth of businesses and developing a wider range of activity in villages are major priorities for South West Wiltshire. With the proposed small cell network all three of these can issues can be improved.

This is a capital project and the applicant has committed to paying 50% of the project cost, meeting the community area grant criteria.

**Proposal**

That the Area Board determines the application.

Application ID	Applicant	Project Proposal	Requested
<a href="#">2928</a>	CHALKE VALLEY SHORT MAT BOWLS CLUB	Chalke Valley Short Mat Bowls Club Replacement Mats	£1360.00

**Project Description:**

Chalke Valley Short Mat Bowls Club is based in Broad Chalke and provides an opportunity for local people of all ages and abilities to play an indoor sport all year round. The grant is required for the replacement of the two bowling mats we have. They are the original mats and are in need of updating as they are over ten years old. Two new mats matching ours in material thickness and speed will cost 1860. Therefore we are looking for a grant in the sum of 1360 to replace both mats like for like including our contribution of 500 from our available reserves.

**Input from Community Engagement Manager:**

The applicant reports that the club membership currently stands at 18 players

registered with the Wiltshire Short Mat Bowls Association. The club competes in local league matches plays friendly matches against other clubs in the region and meets every Monday for a practice night. There is no restriction on who can play the sport so the club is open to people of all ages and abilities.

This is a capital project but the applicant has not committed to paying 50% of the project cost, not meeting the community area grant criteria.

**Proposal**

That the Area Board determines the application.

No unpublished documents have been relied upon in the preparation of this report

**Report Author:**

Stephen Harris

Community Engagement Manager

01722 434211

[Stephen.Harris@wiltshire.gov.uk](mailto:Stephen.Harris@wiltshire.gov.uk)

